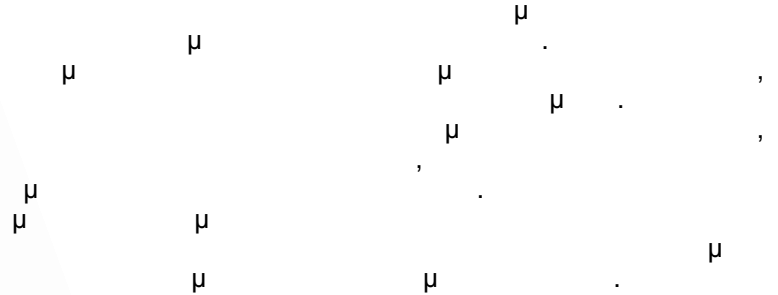
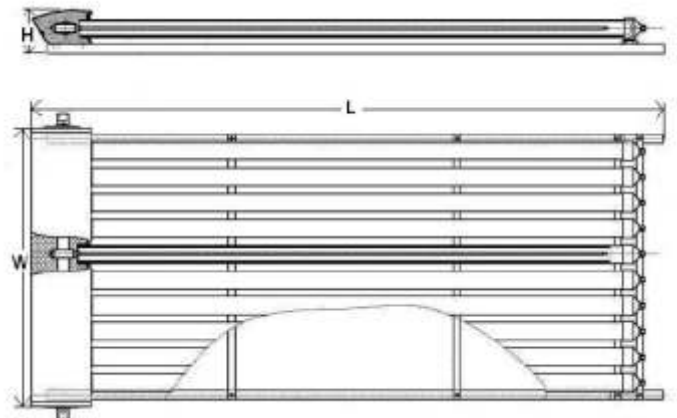
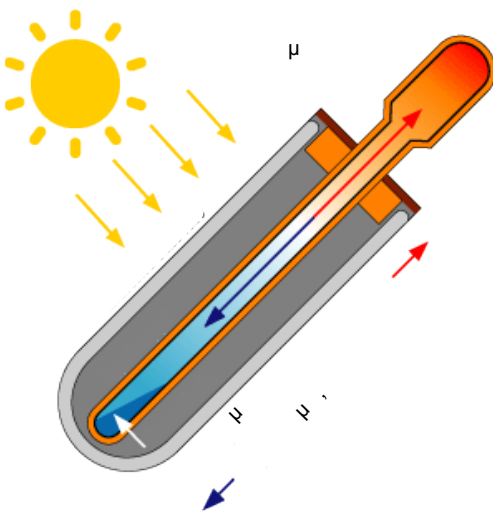


Thermostahl



- μ : 78 mm
- μ 40 mm
- 15-75 ,
- μ Ø58 x 180 mm
- 200°C μ μ
- μ 95°C
- 4 bar, μ 10 bar
- μ μ μ :
- μ (μ)
- μ μ



	μ	μ	μ	mm			boiler	
	m^2	lit		L	W	H	kg	lit
JDL-PM 10	1,3	0,77	10	2020	995	155	39,9	100
JDL-PM 15	1,9	1,15	15	2020	1410	155	58,3	150
JDL-PM 20	2,6	1,54	20	2020	1825	155	77,1	200
JDL-PM 25	3,3	1,92	25	2020	2240	155	96,1	240
JDL-PM 30	3,9	2,30	30	2020	2655	155	114,1	300